

# AV 1010 GS

By Departamento técnico Norberto Ronga, Audio Sudamericana  
Gral. Madariaga 6939  
CABA



## Box Properties

### --Description--

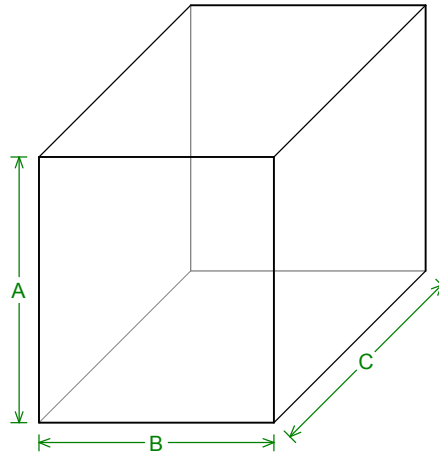
Name: Gabinete sugerido  
Type: Vented Box  
Shape: Prism, square  
Company: Audio Sudamericana

### --Box Parameters--

Vb = 26, liters  
V(total) = 28,2 liters  
Fb = 71, Hz  
QL = 7,  
F3 = 71,17 Hz  
Fill = minimal

### --Vents--

No. of Vents = 1  
Vent shape = other  
Vent ends = one flush  
Av = 66,65 sq.cm  
Lv = 66,79 mm



### --External Dimensions--

A = 346, mm  
B = 306, mm  
C = 372,9 mm

### --Internal Dimensions--

A = 310, mm  
B = 270, mm  
C = 336,9 mm

### --Wall Thickness--

Front = 18, mm  
Side = 18, mm

## Driver Properties

### --Description--

Name: AV 1010  
Type: Standard one-way driver  
Company: American Vox

### --Configuration--

**No. of Drivers = 1**

### --Mechanical Parameters--

Fs = 63,6 Hz  
Qms = 11,81  
Vas = 29,41 liters  
Cms = 0,172 mm/N  
Mms = 36,27 g  
Rms = 1,231 kg/s  
Xmax = 3, mm  
Xmech = 6, mm  
P-Dia = 210, mm  
Sd = 347, sq.cm  
P-Vd = 0,104 liters

### --Electrical Parameters--

Qes = 0,266  
Re = 5,4 ohms  
Le = 0,778 mH  
Z = 6,48 ohms  
BL = 17,15 Tm  
Pe = 350, watts

### --Electromech. Parameters--

Qts = 0,26  
no = 2,743 %  
1-W SPL = 96,53 dB  
2.83-V SPL = 98,24 dB

**Box Parts**

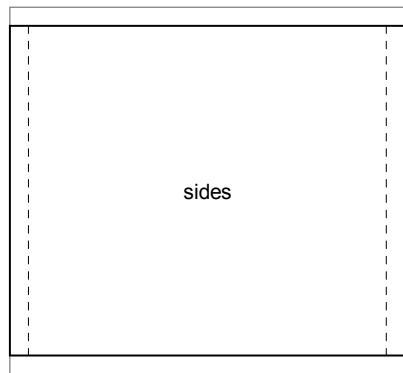
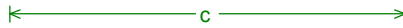
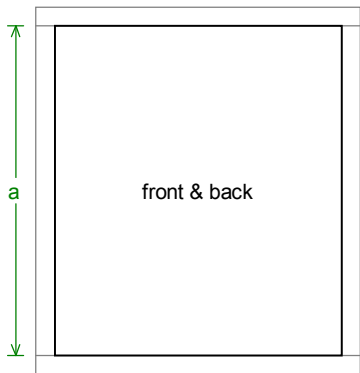
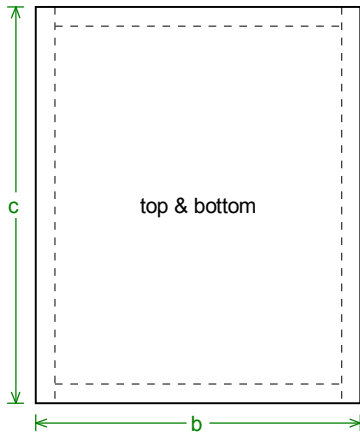
Box Shape: Square Prism

1 Top, 1 Bottom: depth (c) = 372,9 mm  
width (b) = 306,, thickness = 18, mm

1 Front, 1 Back: height (a) = 310, mm  
width (d) = 270,, thickness = 18, mm

2 Sides: height (a) = 310, mm  
depth (c) = 372,9, thickness = 18, mm

--Driver Mounting--  
Mounting: Flush



### Wiring Diagram

