

Custom Vented Box Design

By Departamento técnico , Audio Sudamericana
Gral. Madariaga 6939 C.A.B.A.



Box Properties

--Description--

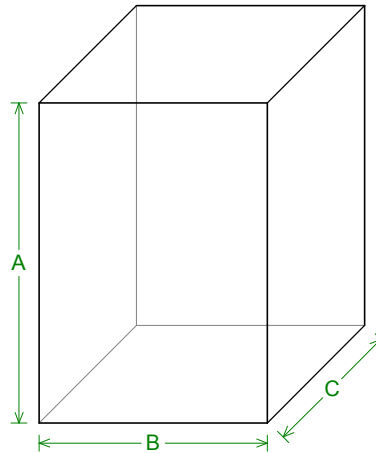
Name: Bass reflex
Type: Vented Box
Shape: Prism, square
Company: Audio Sudamericana

--Box Parameters--

Vb = 48 liters
V(total) = 48.52 liters
Fb = 68 Hz
QL = 6.376
F3 = 60.03 Hz
Fill = normal

--Vents--

No. of Vents = 1
Vent shape = other
Vent ends = one flush
Av = 100 sq.cm
Lv = 22.74 mm



--External Dimensions--

A = 524 mm
B = 374 mm
C = 301.3 mm

--Internal Dimensions--

A = 500 mm
B = 350 mm
C = 277.3 mm

--Wall Thickness--

Front = 12 mm
Side = 12 mm

Driver Properties

--Description--

Name: BW 1017
Type: Standard one-way driver
Company: American Vox

--Configuration--

No. of Drivers = 1

--Mechanical Parameters--

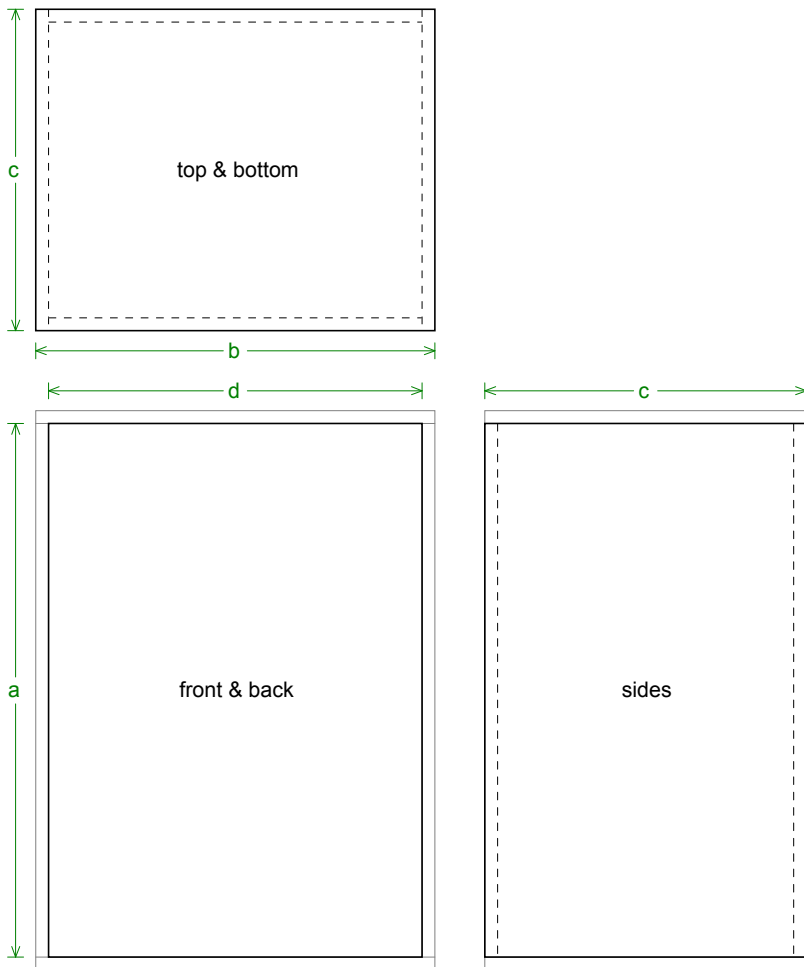
Fs = 69.8 Hz
Qms = 7.595
Vas = 36.75 liters
Cms = 0.212 mm/N
Mms = 24.55 g
Rms = 1.416 kg/s
Xmax = 5.41 mm
Xmech = 8.115 mm
P-Dia = 211 mm
Sd = 349.7 sq.cm
P-Vd = 0.189 liters

--Electrical Parameters--

Qes = 0.757
Re = 6.36 ohms
Z = 7.632 ohms
BL = 9.515 Tm

--Electromech. Parameters--

Qts = 0.688
no = 1.592 %
1-W SPL = 94.17 dB
2.83-V SPL = 94 dB



Box Parts

Box Shape: Square Prism

1 Top, 1 Bottom: depth (c) = 301.3 mm
width (b) = 374, thickness = 12 mm

1 Front, 1 Back: height (a) = 500 mm
width (d) = 350, thickness = 12 mm

2 Sides: height (a) = 500 mm
depth (c) = 301.3, thickness = 12 mm

--Driver Mounting--
Mounting: Flush

Wiring Diagram

